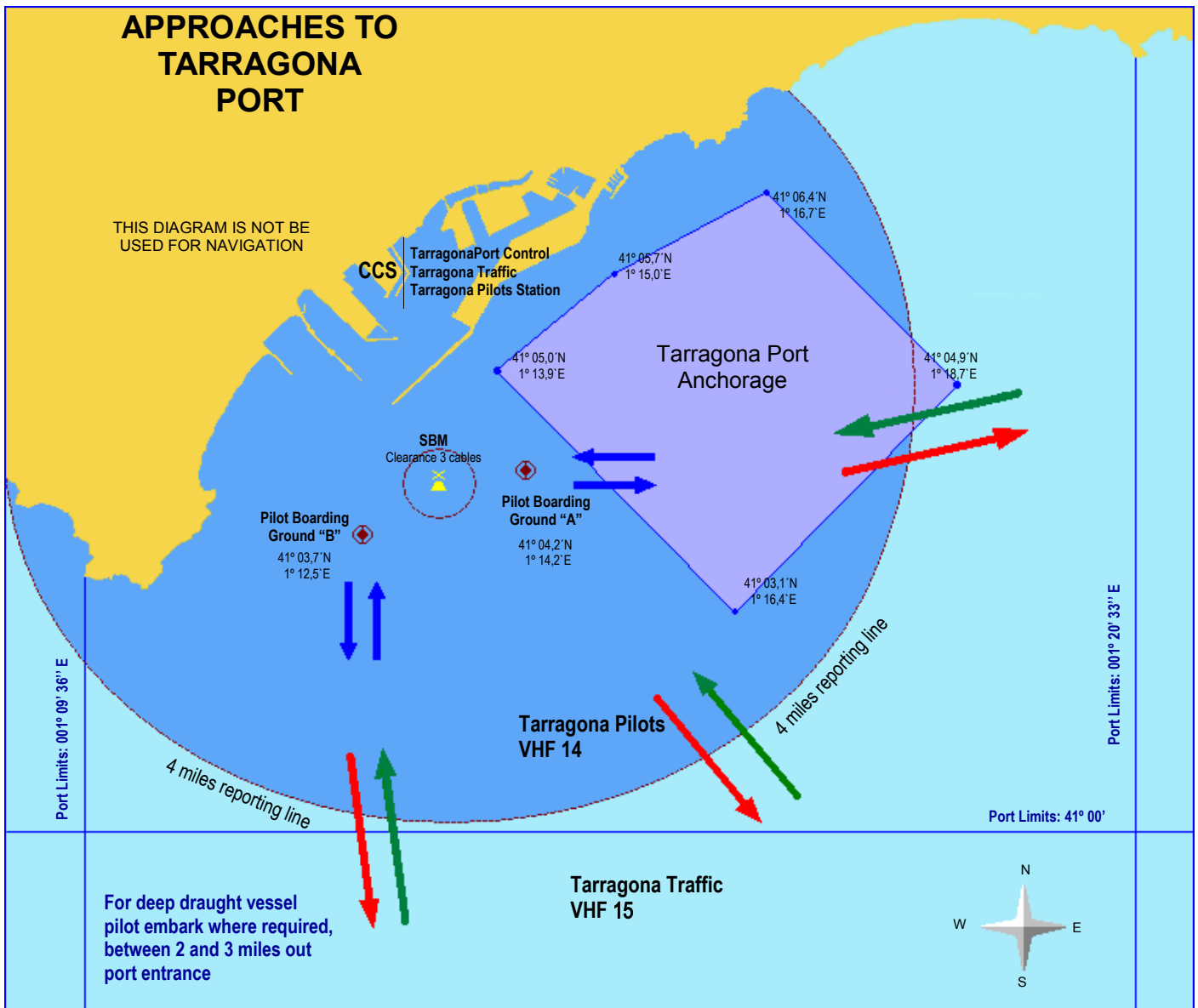


APPROACHES TO TARRAGONA PORT



PORT TRAFFIC

INBOUND VESSELS

Vessels incoming to Tarragona Port must make contact with "Tarragona Traffic", VHF 16/15, such as:

- **Dry Cargo Vessels:**
One hour or ten miles prior arrival to Tarragona roads.
- **Dangerous Cargo Vessels:**
Two hours or twenty miles prior arrival to Tarragona roads.

After making the first contact, the vessels will maintain a continuous listening watch up to the arrival of the four miles circle on VHF 15 (Tarragona Traffic).

At the four miles circle approach point (Pilotage area), contact must be made with the Tarragona Pilots on VHF 14 to obtain instructions about the position for a boarding pilot and must maintain continuous listening watch on this channel (Tarragona Pilots).

OUTBOUND VESSELS

Vessels wanting to go out of port will have to call Tarragona Pilot VHF 14 one hour before the effective moment to commencing manoeuvres. Depending on the conditions of the traffic, Tarragona Pilot will indicate the vessel that it needs to return contact twenty minutes before its ready to commence manoeuvres.

Whilst the vessel is being navigated outwards within the four miles circle must maintain listening on VHF 14 (Tarragona Pilots) for a permanent revision of traffic flow on the area, at the point of arrival to the four miles circle.

Tarragona Pilots will indicate that a change of frequency should be made to the working channel of Tarragona Traffic VHF 15, contact must be continual always on this channel until that vessels leave the port waters.

ANCHORED VESSELS

Vessels proceeding to anchorage will contact Tarragona Traffic VHF 15 requesting anchorage position.

Just when arriving at the four miles circle they must contact Tarragona Pilots for update traffic and maintain continuous listening watch on VHF 14 until dropping anchor. The same procedure will made when vessels leaving from anchorage.

After completion of the anchorage drop, the vessel must inform Tarragona Pilots VHF 14 about the hour of dropage and their present position.

From this moment onwards they must maintain a continuous listening watch on:

- Tarragona Pilots VHF 14 to receive instructions on his prospects.
- Tarragona Traffic VHF 15 to receive any other class of information.

OTHER INFORMATIONS

Emergency

In case of emergency on board, the following stations are on permanent duty 24 hours.

- Tarragona Traffic VHF 15
- Tarragona Pilots VHF 14

Vessels in the port have to follow the instructions given by Port Emergency Plan Authorities unless they have contradictory safety reasons which then have to be immediately reported to the authorities.

Vessels are requested to inform the aforementioned stations reporting any pollution observed on port waters.

Special Operations

Special operations like launching lifeboats, cleaning, rinsing or painting of the hull, diving operations, main engine immobilisation, hot works and other must be permitted by port authorities and informed to Tarragona Traffic VHF 15

Pilotage

Compulsory for vessels over 500 GT.

Tugs and linesmen

Tugs and linesmen assistance be ordered by Pilot Station.